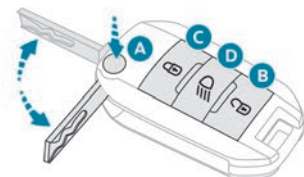


# READY TO GO PEUGEOT 208



## EXTERIOR

### Remote control key



- A. Unfolding/Folding.
- B. Unlocking.  
Disarming the alarm.
- C. Locking.  
Locating the vehicle.  
Arming the alarm.
- D. Guide-me-home lighting.

### Boot

#### Opening



After unlocking the boot or the vehicle using the remote control or the key, press the opening control, then raise the tailgate.

#### Closing

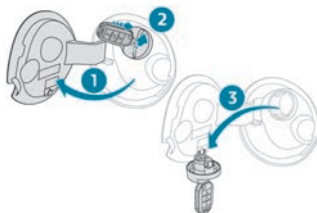
- Lower the tailgate using the interior grab handle.
- If necessary, press down on the tailgate to fully close it.

### Fuel tank

Capacity of the tank:

- around **50 litres** (petrol).
- around **50 litres** (Diesel).
- around **45 litres** (BlueHDi Diesel).

### Refilling

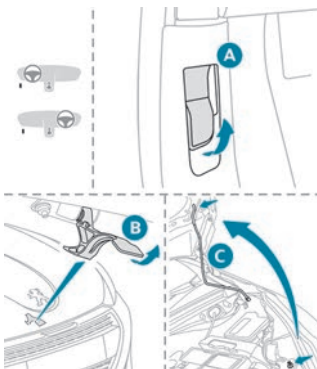


1. Opening the fuel filler flap.
2. Removing the filler cap.
3. Hanging up the filler cap.

**!** If you have put in the wrong fuel for your vehicle, you must have the fuel tank drained and filled with the correct fuel before starting the engine.

### Bonnet

#### Opening

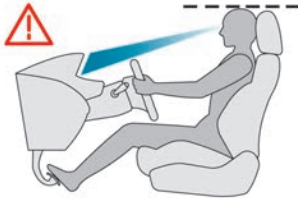


- A. Interior control.
- B. Exterior control.
- C. Bonnet stay.

**!** Take care when working under the bonnet, as certain areas of the engine may be extremely hot (risk of burns) and the cooling fan could start at any time (even with the ignition off).

## INTERIOR

### PEUGEOT i-Cockpit



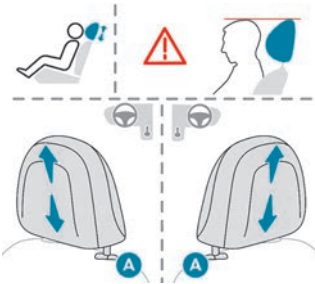
Before taking to the road and in order to take advantage of the specific ergonomics of the PEUGEOT i-Cockpit, adjust in the following order:

- the height of the head restraint,
- the seat backrest angle,
- the seat cushion height,
- the longitudinal position of the seat,
- the depth and then the height of the steering wheel,
- the rear view mirror and door mirrors.

Once these adjustments have been made, make sure that the "head-up" instrument panel can be viewed correctly over the smaller diameter steering wheel.

### Front seats

#### Head restraints



- ☞ To raise a head restraint, pull it upwards.
- ☞ To remove it, press the lug **A** and pull upwards.
- ☞ To refit it back in place, engage the head restraint rods in the openings keeping them in line with the seat backrest.
- ☞ To lower it, press the lug **A** and push down on the head restraint at the same time.

#### Seat backrest angle



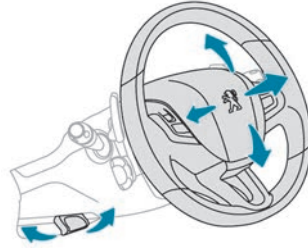
#### Height adjustment



### Longitudinal adjustment



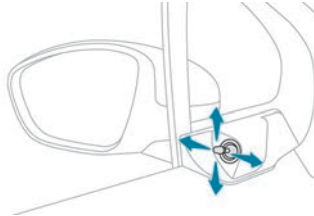
### Steering wheel adjustment



- ☞ **With the vehicle stationary**, pull the control lever to release the steering wheel.
- ☞ Adjust the height and reach to suit your driving position.
- ☞ Push the control lever to lock the adjustment mechanism.

### Door mirrors

#### Manual adjustments

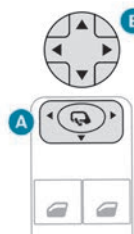


- ☞ Operate the lever in the four directions to adjust the angle of the mirror glass.

#### Folding

- ☞ Fold the mirror manually to protect it when the vehicle is parked.
- ☞ Unfold it before moving off again.

#### Electric adjustments



- ☞ Move control **A** to the right or to the left to select the corresponding mirror.
- ☞ Move control **B** in any of the four directions to adjust.
- ☞ Return control **A** to the central position.

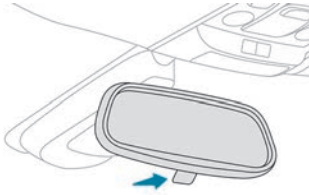
#### Folding/unfolding

- ☞ With the ignition on, pull control **A** rearwards to fold the mirrors.
- ☞ Pull it again to unfold them.

## Rear view mirror

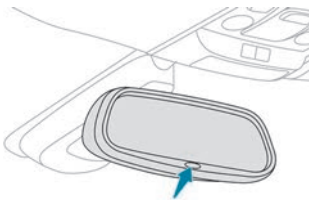
### Manual model

#### Day/night position



- ☞ Pull the lever to change to the "night" anti-dazzle position.
- ☞ Push the lever to change to the normal "day" position.

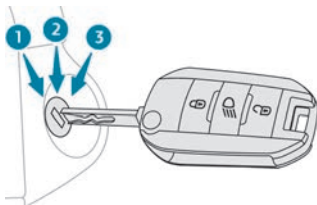
### Automatic "electrochrome" model



This system automatically and progressively changes between day and night use by means of a sensor measuring the light coming from the rear of the vehicle.

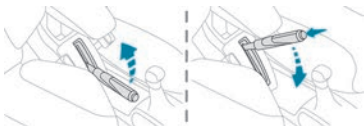
## Starting – Switching off the engine

### Ignition switch



1. **Stop** position.
2. **Ignition** on position.
3. **Start** position.

### Parking brake



#### Releasing

- ☞ Pull the parking brake lever up slightly, press the release button then lower the lever fully.

#### Applying

- ☞ Pull the lever up to immobilise your vehicle.

## Manual gearbox

### 5-speed

#### Engaging reverse gear



- ☞ Move the gear lever fully to the right, then pull it back.

### 6-speed

#### Engaging reverse gear



- ☞ Raise the collar below the gear lever knob, then move the lever fully to the left and then forward.

## Automatic gearbox (EAT6)



- P.** Parking.
- R.** Reverse.
- N.** Neutral.
- D.** Drive – AUTO driving mode.
- M.** Manual mode.
- S.** Sport – More dynamic driving.
- ☼ Snow – Driving on snowy roads (depending on engine).

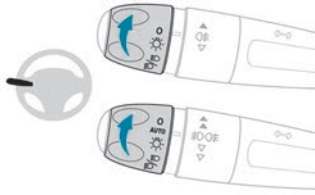
### Starting

Parking brake applied.

- ☞ Start the engine.
- ☞ Lever in position **P** or **N**.
- ☞ Fully depress the brake pedal.
- ☞ Release the parking brake.
- ☞ Place the selector at **D** or **R**.
- ☞ Release the brake pedal and press the accelerator pedal progressively.

The vehicle moves off immediately.


## Lighting control stalk

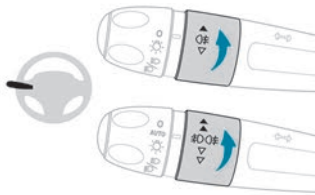



**0** Lighting off (ignition off)/Front daytime running lamps (engine running).

**AUTO** Automatic illumination of headlamps.

 Sidelamps only.

 Dipped or main beam headlamps.

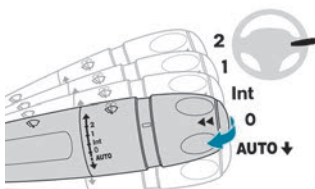


 Rear foglamp only.

 Front foglamps and rear foglamp.

## Wiper control stalk

### Front wipers




**2** Fast (heavy rain).

**1** Normal (moderate rain).

**Int** Intermittent (proportional to the speed of the vehicle).

**0** Off.

 Single wipe (press down and release).

### Automatic rain-sensitive windshield wipers

**AUTO** The windshield wipers operate automatically, without any action on the part of the driver, when rain is detected (sensor behind the rear view mirror), adapting their speed to the intensity of the rainfall.

### Front screenwash


Pull the wiper control stalk towards you. The screenwash and then the wipers operate for a preset time.

### Rear wiper

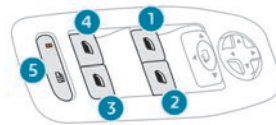


 Off.

 Intermittent wipe.

 Wash-wipe (set duration).

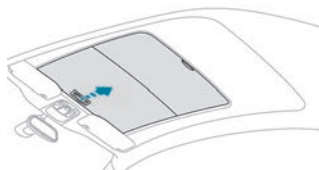
## Electric windows




1. Left-hand front.
2. Right-hand front.
3. Right-hand rear.
4. Left-hand rear.
5. Deactivation of the electric window controls located at the rear seats.

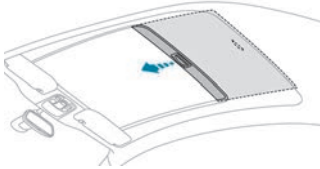
## Sunroof blind

### Opening



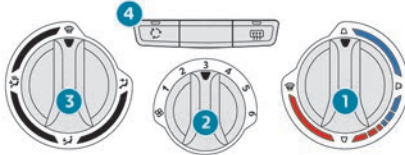
 Take the blind by its handle and push it rearward to the desired position.

## Closing

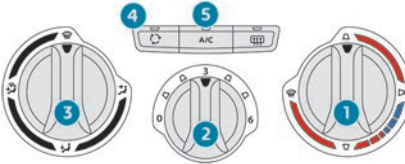


- ☞ Take the blind by its handle and pull it forward to the desired position.

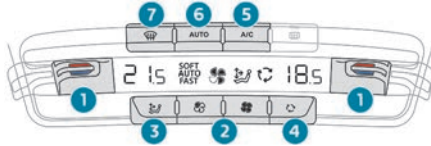
## Heating



## Heating/Manual air conditioning



## Dual-zone automatic air conditioning



1. Temperature adjustment for left/right side.
2. Air flow adjustment.
3. Air distribution adjustment.
4. Recirculation of interior air.
5. Air conditioning on/off.
6. Automatic comfort programme.
7. Automatic visibility programme.

## Demisting – defrosting



Windscreen



Rear screen

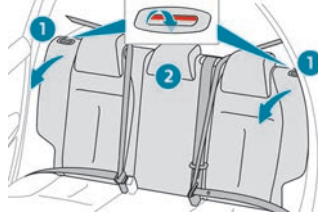
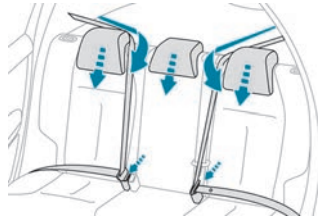
## Heated seats



- 0: Off.
- 1: Low.
- 2: Medium.
- 3: High.

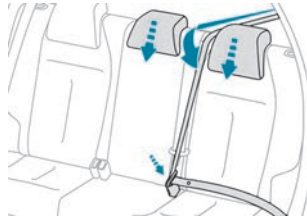
## One-piece bench seat

Bench seat with fixed one-piece cushion and folding one-piece backrest.



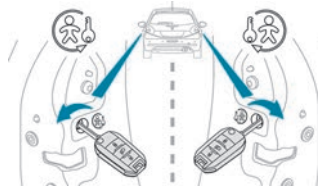
## 2/3-1/3 split bench seat

Bench seat with fixed one-piece cushion and split backrest (left-hand 2/3, right-hand 1/3) which can be folded individually to adapt the load space in the boot.



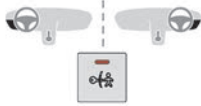
## Child lock

### Manual child lock



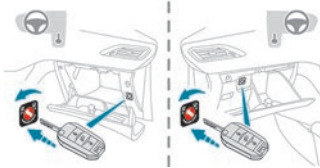
Mechanical system to prevent opening of a rear door using its interior control. The control is located on the edge of each rear door.

## Electric child lock



Electric system for locking the rear doors so that they cannot be opened using their interior controls.

## Deactivating the front passenger airbag



- ☞ Insert the key into the front passenger airbag deactivation switch.
- ☞ Turn it to the "OFF" position.
- ☞ Remove the key, leaving the switch in this position.



This warning lamp comes on whenever the ignition is on and while the airbag is deactivated.

- ☞ To reactivate the airbag, turn the key to the "ON" position.

## 'ISOFIX' mountings



## Emergency or assistance call



### Peugeot Connect SOS



In an emergency, press this button for more than 2 seconds.

The flashing LED and the voice message confirm that the call has been made to the "Peugeot Connect SOS" call centre\*.

- \* In accordance with the general conditions of use for the service available from dealers and subject to technological and technical limitations.

### Peugeot Connect Assistance



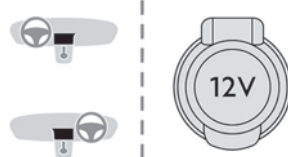
Press this button for more than 2 seconds to request assistance if the vehicle breaks down.

A voice message confirms that the call has been made\*\*.

- \*\* According to the geographic coverage of "Peugeot Connect SOS", "Peugeot Connect Assistance" and the official national language chosen by the owner of the vehicle.

The list of countries covered and of PEUGEOT CONNECT services is available from dealers or on the website for your country.

## 12 V accessory socket



## USB port/Jack auxiliary socket



## Audio system



## Audio system/Bluetooth®



## Pairing a Bluetooth® telephone

Activate the telephone's Bluetooth function and ensure that it is set as visible to all (refer to the telephone user guide).

**MENU** Press the **MENU** button.

 Select "Bluetooth".


 Select "Search".

A window is displayed with "Searching for device".

 In the list, select the telephone to pair.



**OK** Confirm with "OK".

 A virtual keypad is displayed on the screen: choose a 4-digit code.

**OK** Confirm with "OK".

A message is displayed on the screen of the telephone: enter the same code and confirm.

A message appears on the screen to confirm that the connection is successful.

## Steering mounted controls



Radio: select the previous/next preset radio station.  
CD/USB: select the genre/artist/folder from the classification list.  
Select the previous/next item in a menu.



Radio: automatic search for higher frequency.  
CD/MP3/USB: select the next track.  
CD/USB: long press: fast forward.



Change the audio source.  
Confirm a selection.  
Call/end call on the telephone.  
Long press: access to the calls list.



Radio: automatic search for lower frequency.  
CD/MP3/USB: select the previous track.  
CD/USB: long press: rewind.



Increase volume.

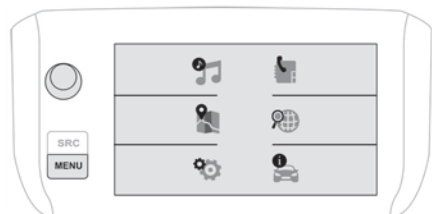


Decrease volume.



Mute on: cut the sound by simultaneously pressing the volume increase and decrease buttons.  
Mute off: press one of the two volume buttons.

## Touch screen



Press the **MENU** button at the side of the touch screen to access the rolling menus display, then use the buttons that appear on the touch screen. Some menus may display across two pages: press the **"OPTIONS"** button to access the second page.

To deactivate or activate a function, select **"OFF"** or **"ON"**.



Use this button to adjust the settings for a function.



Use this button for access to additional information on the function.



Use this button to confirm.



Use this button to return to the previous page.

## Menus

Press with three fingers on the touch screen to show the rolling menus display.



**Radio Media**



**Connected navigation**



**Telephone**



**Settings**

Allows configuration of the display and the system.



**Applications**

Allows direct access to the trip computer.



**Driving or Vehicle\***

Allows the activation, deactivation and adjustment of settings for certain functions.

\* Depending on equipment.

## Upper banner



Access to **Settings** for the touch screen (date/time, languages, units, etc.).

## Pairing a Bluetooth® telephone



Activate the Bluetooth® function on the telephone and ensure that it is "visible to all" (telephone configuration).

## Procedure from the telephone



Select the system name in the list of devices detected.

In the system, accept the connection request from the telephone.



To complete the pairing, whichever procedure is used (from the telephone or from the system), ensure that the code is the same in the system and in the telephone and confirm.

## Procedure from the system



Press **Telephone** to display the primary page.



Press "**Connect telephone**".

Or



Select "**Search**".  
The list of telephones detected is displayed.



Select the name of the chosen telephone in the list.

## Connection sharing

The system offers to connect the telephone with 3 profiles:

- "**Telephone**" (hands-free kit, telephone only),
- "**Streaming**" (streaming: wireless playing of the audio files on the telephone),
- "**Mobile internet data**".

## Steering mounted controls

### Steering mounted controls – Type 1



**Radio:**  
Select the previous/next preset radio station.  
Select the previous/next item in a menu or a list.

**Media:**  
Select the previous/next track.  
Select the previous/next item in a menu or a list.



**Radio:**  
Short press: display the list of radio stations.  
Long press: update the list.

**Media:**  
Short press: display the list of folders.  
Long press: display the available sorting options.



Change audio source (radio; USB; AUX if equipment connected; CD; streaming).



Confirm a selection.



Increase volume.



Decrease volume.



Mute/restore the sound by simultaneously pressing the increase and decrease volume buttons.

### Steering mounted controls – Type 2



**Voice commands:**  
This control is located on the steering wheel or at the end of the lighting control stalk (depending on equipment).  
Short press, smartphone voice commands via the system.



Increase volume.



Mute/restore the sound.  
Or  
Mute by pressing the volume increase and decrease buttons simultaneously.  
Restore the sound by pressing one of the two volume buttons.



Decrease volume.

**SRC**

**Media** (short press): change the multimedia source.



**Telephone** (short press): start telephone call.

**Call in progress** (short press): access telephone menu.

**Telephone** (long press): reject an incoming call, end call; when no call is in progress, access telephone menu.



**Radio** (rotate): automatic search for the previous/next station.

**Media** (rotate): previous/next track, move in a list.

**Short press:** confirm a selection; if nothing selected, access to presets.

**LIST**

**Radio:** display the list of stations.

**Media:** display the list of tracks.

**Radio** (long press): update the list of stations received.

## Setting the time and date

### Instrument panel



12/000



20:34

Each press of this button toggles between the following settings:

- hour,
- minutes,
- 12 or 24 hour format.



## With PEUGEOT Connect Radio



- Select the **Settings** menu in the upper banner of the touch screen.

- Select "**System configuration**".



- Select "**Date and time**".

- Select "**Date**" or "**Time**".
- Choose the display formats.
- Change the date and/or time using the numeric keypad.
- Confirm with "**OK**".

## With PEUGEOT Connect Nav

Setting of the time and date is only available if synchronisation with the GPS is deactivated.



- Select the "**Settings**" menu.

- Press the "**OPTIONS**" button to go to the secondary page.



- Select "**Setting the time-date**".

- Select the "**Date**" or "**Time**" tab.
- Adjust the date and time using the numeric keypad and confirm.

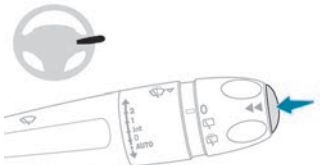


- In the selected tab, press this button to confirm.

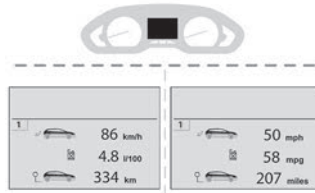
**i** The change between winter and summer time is done by changing the time zone.

## Trip computer

### Instrument panel screen



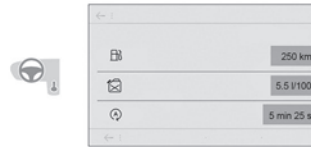
- Each press on the end of the **wiper control stalk** displays the information in turn.



- The current information with:
  - the range,
  - the current fuel consumption,
  - the Stop & Start time counter.

## With the touch screen

**MENU** The information is accessible via the **Driving/Vehicle** menu.



### Permanent display:

- Select the "**Applications**" menu, then the "**Vehicle apps**" tab, then "**Trip computer**".

The trip computer information is displayed in tabs.  
Press one of the buttons to display the desired tab.

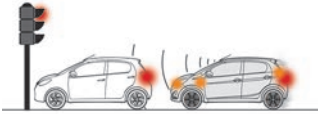
### Temporary display in a specific window:

- Press the end of the wiper control stalk to access the information and display the different tabs.

## DRIVING AIDS

**!** The driving aid systems are convenience aids that do not replace the need to respect speed limits and safety distances, nor the need for vigilance on the part of the driver. Therefore, the driver must be ready at all times to retake control of their vehicle by permanently holding the steering wheel with both hands and keeping their feet near the brake and accelerator pedals. The operation of these systems may be impaired by bad weather or a driving surface in poor condition.

### Active City Brake



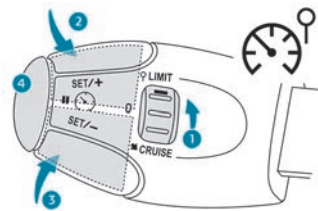
A preventive driving aid system that, using the laser sensor located at the top of the windscreen, automatically applies the vehicle's brakes if driving behind a vehicle that slows down rapidly, stops, or is stationary. The objective is to avoid a collision or reduce the speed of impact.

### Activation/Deactivation

**MENU** It is possible to activate or deactivate the Active City Brake from the **Driving/Vehicle** menu.

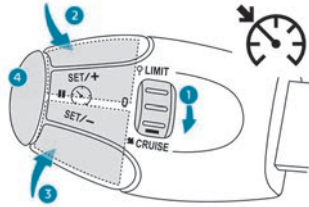


### Speed limiter "LIMIT"



1. Speed limiter mode selection/off.
2. Increase the programmed value.
3. Decrease the programmed value.
4. Speed limiter on/pause.

### Cruise control "CRUISE"

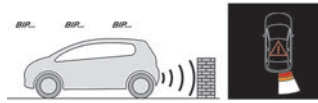


1. Cruise control mode selection/off.
2. Increase the programmed value.
3. Decrease the programmed value.
4. Stop/resume cruise control.

### Parking sensors

Using sensors located in the bumper, this function warns of the proximity of obstacles (e.g. pedestrian, vehicle, tree, barrier) entering their field of detection.

### Rear parking sensors



The system is switched on by engaging reverse gear.

### Audible assistance

The proximity information is given by an intermittent audible signal, the frequency of which increases as the vehicle approaches the obstacle.

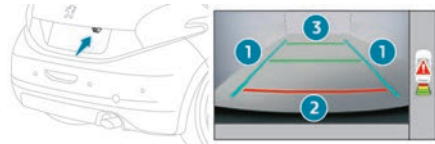
### Visual assistance

It supplements the audible signal by displaying bars on the screen that move progressively nearer to the vehicle (white: more distant obstacles; orange: close obstacles; red: very close obstacles). When the obstacle is very close, the "Danger" symbol is displayed on the screen.

### Front parking sensors

In addition to the rear parking sensors, the front parking sensors are triggered when an obstacle is detected in front and the speed of the vehicle is still below 6 mph (10 km/h).

### Reversing camera



The blue lines **1** represent the general direction of the vehicle (the distance between them represents the width of your vehicle without the door mirrors). The red line **2** represents a distance of about 30 cm beyond the edge of your vehicle's rear bumper. The green lines **3** represent distances of about 1 and 2 metres beyond the edge of your vehicle's rear bumper.

## Park Assist



The system detects a parking space and then provides assistance with the parallel parking manoeuvres. It controls the steering and provides visual and audible information to the driver. The driver controls the accelerator, the brakes and the gears.

## Under-inflation detection

The system monitors the pressure in all four tyres, once the vehicle is moving. It compares the information given by the wheel speed sensors with **reference values, which must be reinitialised after every tyre pressure adjustment or wheel change.**



The system triggers an alert as soon as it detects a drop in the pressure of one or more tyres.

## ENGINES

### Stop & Start

Perfect for urban use, the Stop & Start system reduces fuel consumption and exhaust emissions, as well as the noise level when stationary.

### STOP mode

**ECO** This indicator lamp comes on in the instrument panel and the engine goes into standby.

#### With BlueHDi Diesel and manual gearbox:

- As soon as the vehicle stops or the speed is less than 2 mph (3 km/h) (with 1.5 BlueHDi engine).
- Gear lever in neutral and clutch pedal released.

#### With PureTech petrol and manual or automatic gearbox:

- As soon as the vehicle stops or the speed is less than 2 mph (3 km/h) (with manual gearbox and depending on version).
- Gear lever in neutral and clutch pedal released (manual gearbox).
- Brake pedal pressed or gear lever in position **N** (automatic gearbox).

### START mode

**ECO** This indicator lamp goes off and the engine restarts.

#### With manual gearbox:

- Clutch pedal depressed.

#### With automatic gearbox:

- Gear lever in position **D** or **M**.
- Brake pedal released.

or

- Gear lever in position **N**.
- Brake pedal released.
- Then gear lever in position **D** or **M**.

or

- Reverse gear engaged.

## AdBlue® (BlueHDi engines)

### Range and top-up alerts

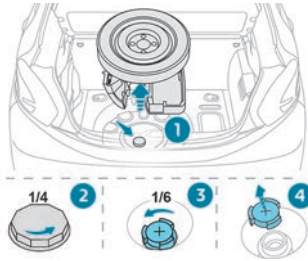


Once this warning lamp comes on, have the AdBlue® topped up as soon as possible (the driving range indicates how far you can travel before restarting is prevented).

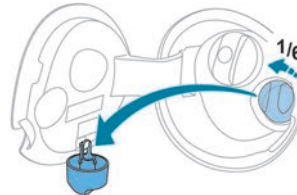
☞ **If you are going to top up the additive yourself, you must first refer to the handbook.**

### Topping up with AdBlue®

#### Access through the boot (1.6 BlueHDi Euro 6.1)



#### Access through the fuel filler flap (1.5 BlueHDi Euro 6.2)



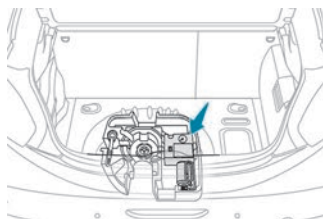
## PRACTICAL INFORMATION

### Access to additional videos



### Temporary puncture repair kit

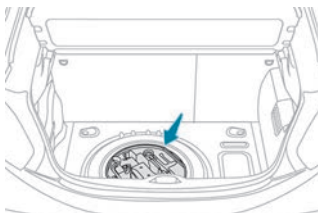
#### Access to the kit



### Spare wheel

**i** When using the "standard" or "space-saver" type spare wheel, do not exceed 50 mph (80 km/h). Have the punctured tyre examined. After inspection, the technician will advise you whether the tyre can be repaired or if it must be replaced.

### Access to the tools



Your vehicle will be fitted with only some of the equipment described in this document, depending on its trim level, version and the specification for the country in which it was sold.

### Access to the Complete Handbook



**This document is not a substitute for the detailed study of the Complete Handbook.**  
From the appropriate Store, download the **Scan MyPeugeot APP** smartphone application.



**ANG. 18208.P040**